

14th Sep., 2009

XPanelDesigner Update : V2.08

The new version of XPanelDesigner was released on 14th Sep This version of designer includes following new features:

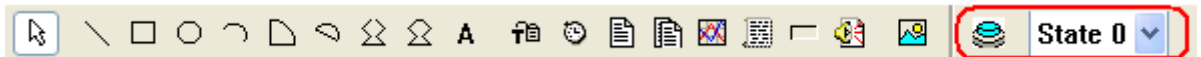
- **Switch/Lamp Function**
- **Modbus Slave Function (RTU,TCP)**
- **Data Server Tag updating speed improved**
- **Screen direction selecting at XT07CB**
- **Communication Driver**
 - **TOP Master Communication driver**
- **And more bugs fixed**

The new version of XPanelDesigner can be downloaded from following URL :

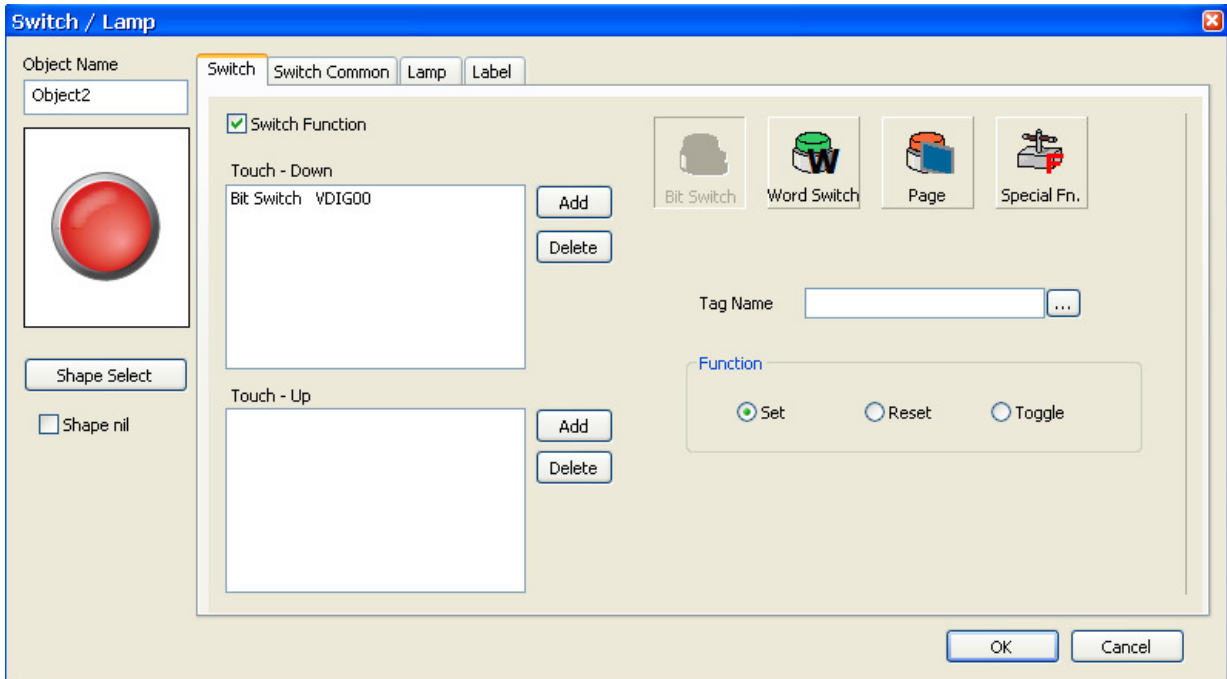
http://www.kdtsys.com/UserFiles/bbs/Eng_XpanelDesigner_V2.08_Setup_R090911.exe

[Switch/Lamp Function]

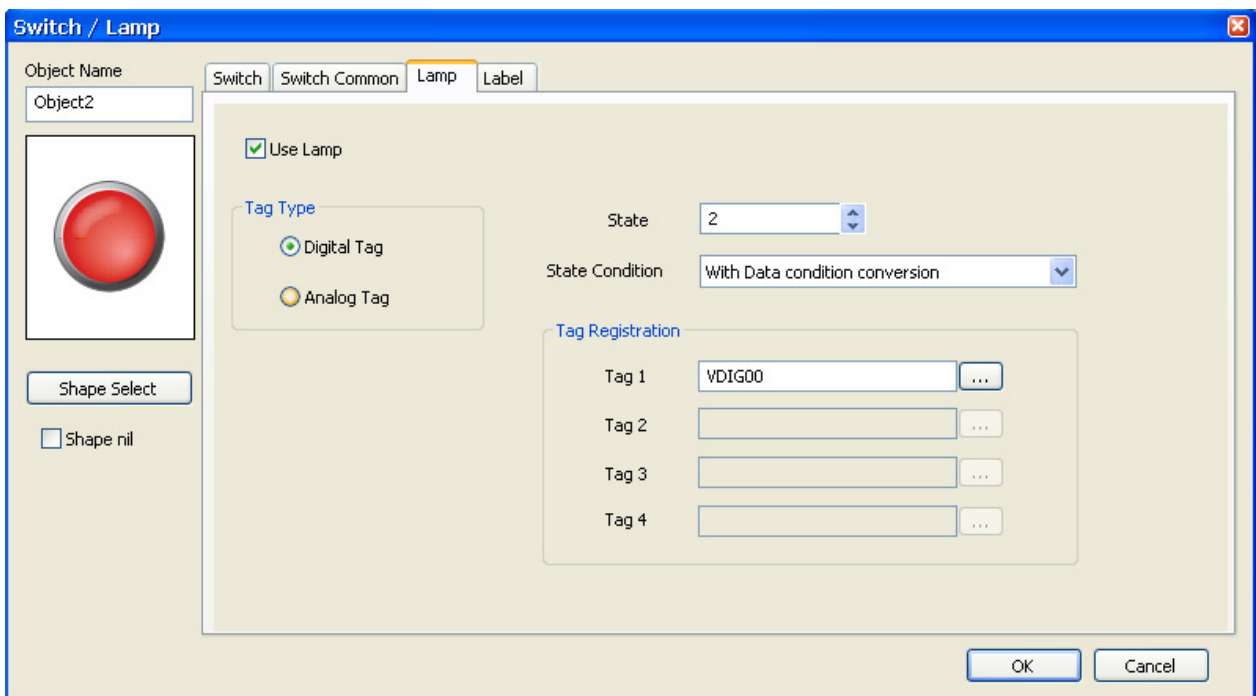
- It is only one that can be included several switch/lamp functions instead using many objects.



< Switch/Lamp Toolbar >



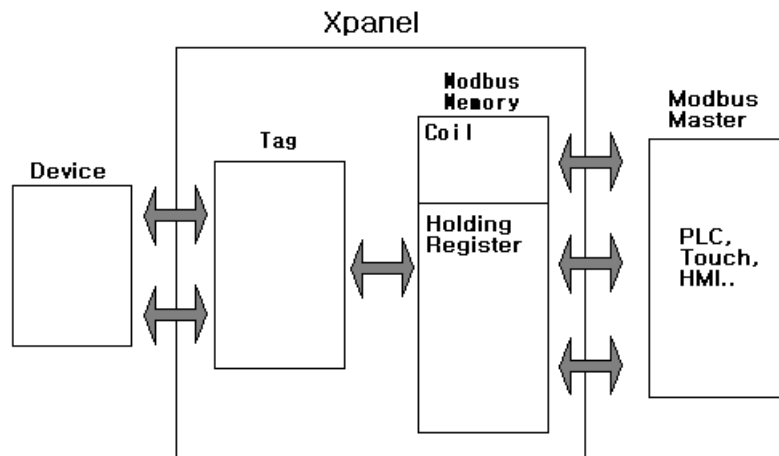
< Switch/Lamp Switch Configuration >



< Switch/Lamp Lamp Configuration >

[Modbus Slave]

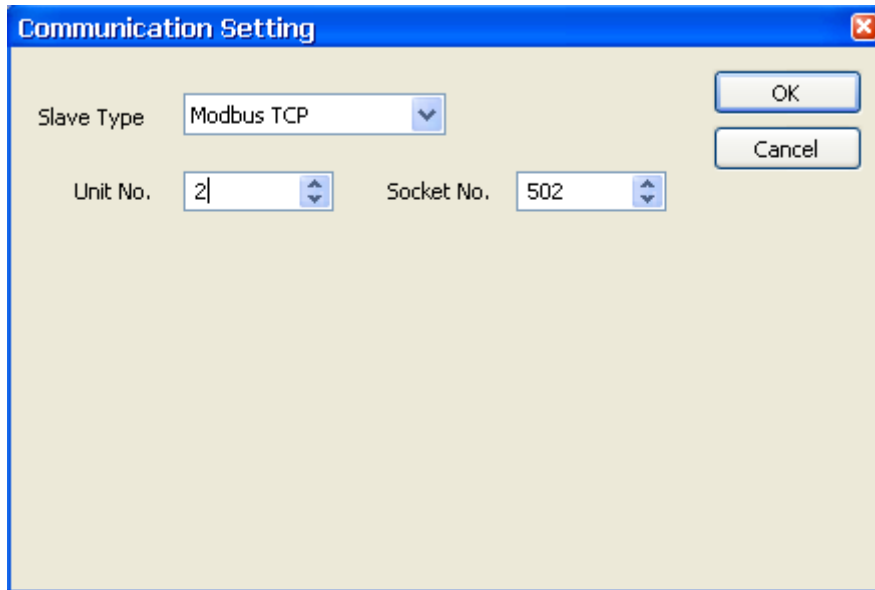
- New version Designer supports Modbus Slave Function. If another equipment supports Modbus Master then it can read or write tag value.



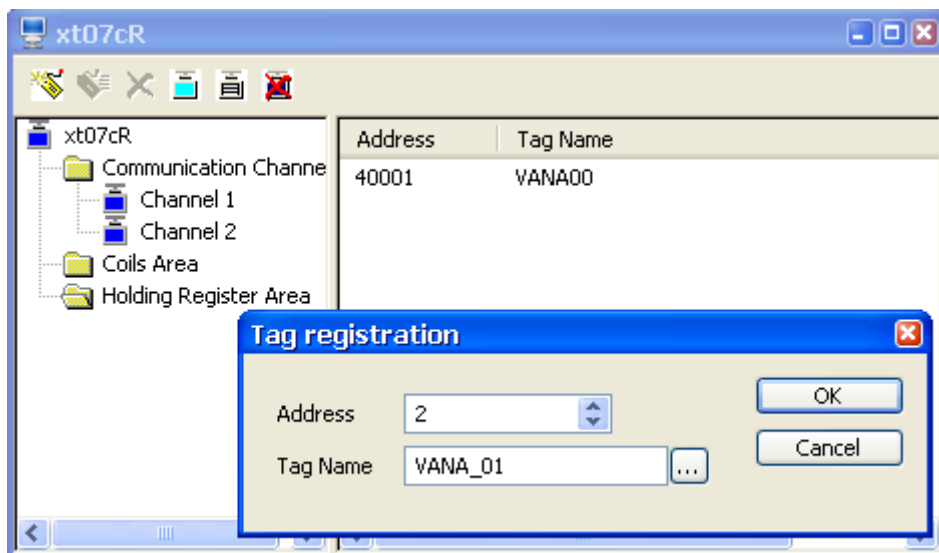
< Modbus Slave Concept >

The screenshot shows the 'Communication Setting' dialog box. The 'Slave Type' is set to 'Modbus RTU'. The 'Unit No.' is '1'. The 'PORT' is 'COM 1' and the 'Baud Rate' is '19200'. The 'MODE' is 'RS232', 'Parity' is 'None', 'Data Bits' is '8 Bits', 'Stop Bit(s)' is '1 Bit', and 'RTS/CTS' is 'OFF'. There are 'OK' and 'Cancel' buttons.

< Modbus Rtu Channel Configuration >



< Modbus Tcp Channel Configuration >



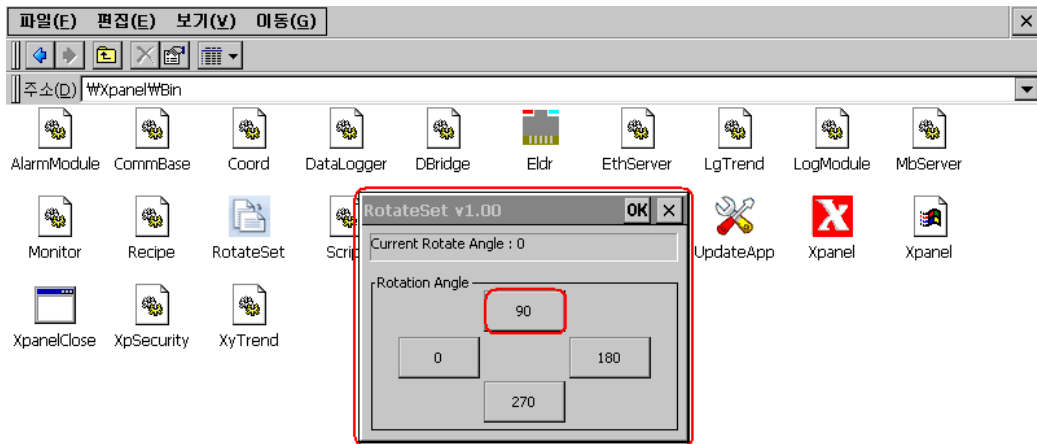
< Holding Register Area Configuration >

[DataServer Tag Updating Speed]

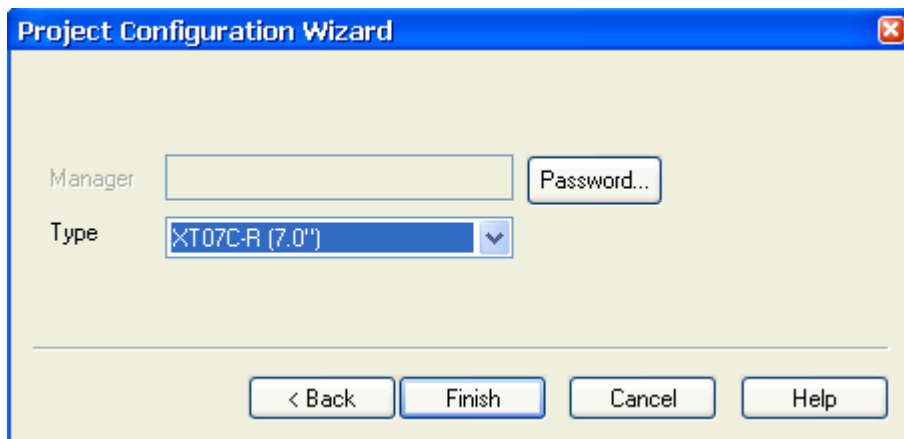
- New version Designer improved data server speed. It is changed communication method. It is communicate only using tags at internal or required by external equipments.

[XT07CB Screen Displaying Direction]

- New version can change displaying screen direction. Also it includes new model XT07C-R for vertical project.

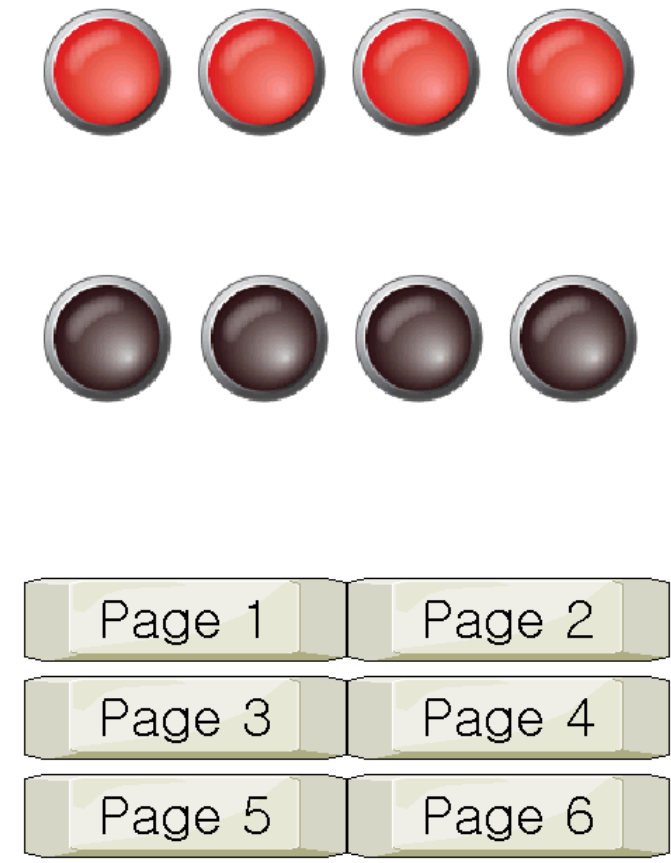


< Displaying configuration at Xpanel, W\Xpanel\WBin\RotateSet.exe >



< Project window >

XT07C-R



< Example Figure >

[Communication Driver]

- TOP master communication driver added for TOP of M2I.